



- 1 **Metal housing made from AISI 316 Ti**
- 2 **Environmentally-friendly – No use of chemicals**
- 3 **Shoulders of the coupling are flame protected**



Double-locked safeguards prevent accidental dismantling

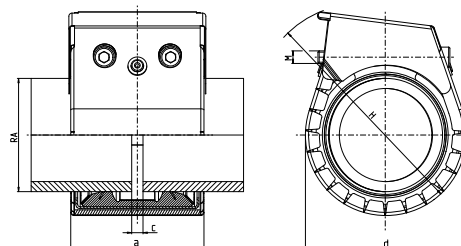
RFP for application at shipbuilding

The NORMACONNECT® RFP is a retrofittable flame protector housing that has been specially designed for use with all NORMACONNECT® FLEX and GRIP pipe couplings. Its low weight and straightforward design allows quick, easy assembly without any tools. The built-in flame resistant mineral fiber mat provides a premium level of flame protection. The Retrofit Flame Protector (RFP) housing has been extensively tested and is approved by several international classification societies.

Advantages at a glance

- Retrofittable
- Easy assembly without tooling
- Low weight
- Meets current IACS requirements
- No chemicals in flame protection mat
- High flexibility
- Clear identification whether coupling is flame protected or not
- Mechanical stress resistant
- Less warehouse costs

Technical data & Ordering information



NORMACONNECT® FGR RFP							
Ø (O.D.)	Designation	Dimensions (approx.)			Weight of RFP (approx.)	W5 Product No.	
		a (mm)	d (mm)	H* (mm)	(kg/piece)		
26.9	NC RFP W5 RFP 26.9	69	60	110	0.09	0573 0000 026	
28.0	NC RFP W5 RFP 28.0	69	60	110	0.09	0573 0000 028	
30.0	NC RFP W5 RFP 30.0	69	60	110	0.10	0573 0000 030	
33.7	NC RFP W5 RFP 33.7	69	65	115	0.10	0573 0000 033	
38.0	NC RFP W5 RFP 38.0	75	70	120	0.11	0573 0000 038	
42.4	NC RFP W5 RFP 42.4	75	75	125	0.12	0573 0000 042	
44.5	NC RFP W5 RFP 44.5	75	75	125	0.12	0573 0000 044	
48.3	NC RFP W5 RFP 48.3	75	80	130	0.13	0573 0000 048	
54.0	NC RFP W5 RFP 54.0	90	90	135	0.14	0573 0000 054	
57.0	NC RFP W5 RFP 57.0	90	90	140	0.16	0573 0000 057	
60.3	NC RFP W5 RFP 60.3	90	95	145	0.16	0573 0000 060	
76.1	NC RFP W5 RFP 76.1	110	110	160	0.24	0573 0000 076	
88.9	NC RFP W5 RFP 88.9	110	120	170	0.26	0573 0000 088	
101.6	NC RFP W5 RFP 101.6	110	135	185	0.28	0573 0000 101	
104.0	NC RFP W5 RFP 104.0	110	135	185	0.29	0573 0000 104	
108.0	NC RFP W5 RFP 108.0	110	140	190	0.30	0573 0000 108	
114.3	NC RFP W5 RFP 114.3	110	145	195	0.31	0573 0000 114	
133.0	NC RFP W5 RFP 133.0	125	170	220	0.41	0573 0000 133	
139.7	NC RFP W5 RFP 139.7	125	175	225	0.43	0573 0000 139	
154.0	NC RFP W5 RFP 154.0	125	190	240	0.45	0573 0000 154	
159.0	NC RFP W5 RFP 159.0	125	195	245	0.49	0573 0000 159	
168.3	NC RFP W5 RFP 168.3	125	205	255	0.50	0573 0000 168	
219.1	NC RFP W5 RFP 219.1	155	260	310	0.73	0573 0000 219	
273.0	NC RFP W5 RFP 273.0	155	315	365	0.87	0573 0000 273	

* Dimensions of the housing are given as assembled on a NORMACONNECT Grip/ Grip E/ Flex/ Flex E pipe coupling. Further sizes available on request.

Information

Sizes from 26.9 mm up to 406,4 mm

Materials

W1	W2	W3	W4	W5
				x