



- 1 Double-lip sealing system
- 2 Standard strip insert
- 3 Conically stamped anchoring ring
- 4 Flame protection housing

The fire resistant coupling

NORMACONNECT® GRIP E-FP pipe couplings with integrated flame protection are used with applications in the marine sector (civil and military) as well as in sprinkler systems. For this purpose the GRIP E type has been equipped with an additional housing made from stainless steel plus a fire-resistant lining which can resist temperatures of 850 °C and upwards.

Advantages at a glance

- Dampens absorbing vibrations, pressure surges
- Weight saving
- Tension free
- Ready to install

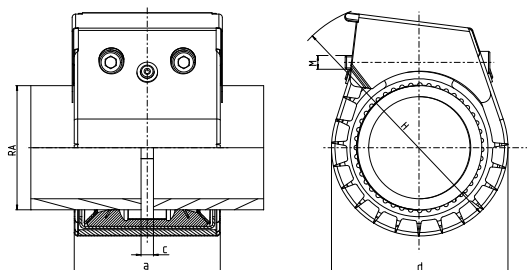
Information

- Sizes: 40.0 mm - 406.0 mm
- Working pressure: 16.0 - 6.0 bar
- Material: AISI 304, AISI 316 Ti
- EPDM:
 - Sizes from 26.9 mm up to 168.3 mm: - 30 °C up to + 125 °C
 - Sizes > 180.0 mm: from - 20 °C up to + 80 °C
- NBR: from - 20 °C up to + 80 °C

Materials

| W1 | W2 | W3 | W4 | W5 |
|----|----|----|----|----|
| | | | | x |

Technical data & ordering information



Technical data & Ordering information

NORMACONNECT® FGR GRIP E-FP

| Ø (O.D.) | Designation | Clamping ranges | PN ¹ (MAWP ¹ from diameter 180) [bar] | WP ² [bar] | C max (mm) | Dimensions (approx.) | | | Weight (approx.) (kg/pc.) | Hex socket locking bolts | | W5 Product No. | |
|-------------|-----------------|--------------------|---|--------------------------|---------------|-------------------------|-----------|-----------|---------------------------------|--------------------------|--------|---------------------------|---------------|
| | | | | | | Oadmin - Od- max | a (mm) | d (mm) | | H (mm) | Thread | Tightening torque (Nm) | EPDM |
| 26.9 | GRIP E-FP 26.9 | 26.4 - 27.5 | 16 | 70 | 3 | 67 | 60 | 110 | 0.42 | M 8 SW 6 | 10 | 0579 9370 026 | 0579 8670 026 |
| 28.0 | GRIP E-FP 28.0 | 27.5 - 28.5 | 16 | 70 | 3 | 67 | 60 | 110 | 0.42 | M 8 SW 6 | 10 | 0579 9370 028 | 0579 8670 028 |
| 30.0 | GRIP E-FP 30.0 | 29.5 - 30.6 | 16 | 70 | 3 | 67 | 60 | 110 | 0.42 | M 8 SW 6 | 10 | 0579 9370 030 | 0579 8670 030 |
| 33.7 | GRIP E-FP 33.7 | 33.0 - 34.3 | 16 | 60 | 3 | 67 | 65 | 115 | 0.43 | M 8 SW 6 | 10 | 0579 9370 033 | 0579 8670 033 |
| 35.0 | GRIP E-FP 35.0 | 34.5 - 35.6 | 16 | 60 | 8 | 75 | 65 | 115 | 0.58 | M 8 SW 6 | 15 | 0579 9370 035 | 0579 8670 035 |
| 38.0 | GRIP E-FP 38.0 | 37.5 - 38.6 | 16 | 60 | 8 | 75 | 70 | 120 | 0.58 | M 8 SW 6 | 15 | 0579 9370 038 | 0579 8670 038 |
| 42.4 | GRIP E-FP 42.4 | 41.7 - 43.0 | 16 | 50 | 8 | 75 | 75 | 125 | 0.59 | M 8 SW 6 | 15 | 0579 9370 042 | 0579 8670 042 |
| 44.5 | GRIP E-FP 44.5 | 44.0 - 45.1 | 16 | 50 | 8 | 75 | 75 | 125 | 0.60 | M 8 SW 6 | 15 | 0579 9370 044 | 0579 8670 044 |
| 48.3 | GRIP E-FP 48.3 | 47.6 - 50.5 | 16 | 50 | 8 | 75 | 80 | 130 | 0.61 | M 8 SW 6 | 15 | 0579 9370 048 | 0579 8670 048 |
| 54.0 | GRIP E-FP 54.0 | 53.3 - 54.6 | 16 | 50 | 17 | 90 | 85 | 135 | 0.92 | M 8 SW 6 | 15 | 0579 9370 054 | 0579 8670 054 |
| 57.0 | GRIP E-FP 57.0 | 56.3 - 57.7 | 16 | 50 | 17 | 90 | 90 | 140 | 0.93 | M 8 SW 6 | 20 | 0579 9370 057 | 0579 8670 057 |
| 60.3 | GRIP E-FP 60.3 | 59.5 - 61.0 | 16 | 40 | 17 | 90 | 95 | 145 | 0.94 | M 8 SW 6 | 20 | 0579 9370 060 | 0579 8670 060 |
| 73.0 | GRIP E-FP 73.0 | 72.1 - 73.8 | 16 | 40 | 17 | 90 | 95 | 145 | 0.94 | M 10 SW 8 | 30 | 0579 9370 073 | 0579 8670 073 |
| 76.1 | GRIP E-FP 76.1 | 75.2 - 77.0 | 16 | 35 | 25 | 110 | 105 | 155 | 1.49 | M 10 SW 8 | 30 | 0579 9370 076 | 0579 8670 076 |
| 84.0 | GRIP E-FP 84.0 | 83.0 - 85.0 | 16 | 35 | 25 | 110 | 110 | 160 | 1.49 | M 10 SW 8 | 30 | 0579 9370 084 | 0579 8670 084 |
| 88.9 | GRIP E-FP 88.9 | 87.0 - 89.9 | 16 | 35 | 25 | 110 | 115 | 165 | 1.56 | M 10 SW 8 | 30 | 0579 9370 088 | 0579 8670 088 |
| 101.6 | GRIP E-FP 101.6 | 100.4 - 102.8 | 16 | 35 | 25 | 110 | 120 | 170 | 1.59 | M 10 SW 8 | 30 | 0579 9370 101 | 0579 8670 101 |
| 104.0 | GRIP E-FP 104.0 | 102.8 - 106.1 | 16 | 35 | 25 | 110 | 135 | 185 | 1.75 | M 10 SW 8 | 30 | 0579 9370 104 | 0579 8670 104 |
| 108.0 | GRIP E-FP 108.0 | 106.8 - 109.2 | 16 | 35 | 25 | 110 | 135 | 185 | 1.76 | M 10 SW 8 | 30 | 0579 9370 108 | 0579 8670 108 |
| 110.0 | GRIP E-FP 110.0 | 108.8 - 111.4 | 16 | 35 | 25 | 110 | 140 | 190 | 1.79 | M 10 SW 8 | 30 | 0579 9370 110 | 0579 8670 110 |
| 114.3 | GRIP E-FP 114.3 | 113.0 - 115.5 | 16 | 35 | 25 | 110 | 145 | 195 | 1.89 | M 10 SW 8 | 40 | 0579 9370 114 | 0579 8670 114 |
| 129.0 | GRIP E-FP 129.0 | 127.6 - 131.1 | 16 | 32 | 35 | 125 | 165 | 215 | 3.25 | M 12 SW 10 | 50 | 0579 9370 129 | 0579 8670 129 |
| 133.0 | GRIP E-FP 133.0 | 131.5 - 134.4 | 16 | 32 | 35 | 125 | 170 | 220 | 3.36 | M 12 SW 10 | 50 | 0579 9370 133 | 0579 8670 133 |
| 139.7 | GRIP E-FP 139.7 | 138.1 - 141.6 | 16 | 32 | 35 | 125 | 175 | 225 | 3.48 | M 12 SW 10 | 50 | 0579 9370 139 | 0579 8670 139 |
| 141.3 | GRIP E-FP 141.3 | 139.6 - 142.8 | 16 | 32 | 35 | 125 | 180 | 230 | 3.48 | M 12 SW 10 | 50 | 0579 9370 141 | 0579 8670 141 |
| 154.0 | GRIP E-FP 154.0 | 152.3 - 156.1 | 16 | 32 | 35 | 125 | 190 | 240 | 3.63 | M 12 SW 10 | 60 | 0579 9370 154 | 0579 8670 154 |
| 159.0 | GRIP E-FP 159.0 | 157.3 - 160.7 | 16 | 32 | 35 | 125 | 195 | 245 | 3.75 | M 12 SW 10 | 60 | 0579 9370 159 | 0579 8670 159 |
| 168.3 | GRIP E-FP 168.3 | 166.5 - 170.1 | 16 | 32 | 35 | 125 | 205 | 255 | 3.83 | M 12 SW 10 | 60 | 0579 9370 168 | 0579 8670 168 |
| 193.7 | GRIP E-FP 193.7 | 192.0 - 196.0 | 10 | 20 | 35 | 125 | 235 | 285 | 6.9 | M 16 SW 14 | 100 | 0579 9370 193 | 0579 8670 193 |
| 206.0 | GRIP E-FP 206.0 | 202.0 - 208.0 | 10 | 20 | 35 | 125 | 250 | 300 | 7.2 | M 16 SW 14 | 100 | 0579 9370 206 | 0579 8670 206 |
| 219.1 | GRIP E-FP 219.1 | 216.0 - 221.0 | 10 | 20 | 35 | 125 | 260 | 310 | 7.4 | M 16 SW 14 | 100 | 0574 8370 219 | 0574 8670 219 |
| 225.0 | GRIP E-FP 225.0 | 222.0 - 227.0 | 10 | 16 | 35 | 155 | 265 | 315 | 7.0 | M 16 SW 14 | 100 | 0579 9370 225 | 0579 8670 225 |
| 229.9 | GRIP E-FP 229.9 | 228.0 - 232.0 | 5.5 | 16 | 35 | 155 | 270 | 320 | 7.0 | M 16 SW 14 | 100 | 0579 9370 229 | 0579 8670 229 |
| 244.5 | GRIP E-FP 244.5 | 242.0 - 247.0 | 5.5 | 15 | 35 | 155 | 285 | 335 | 7.3 | M 16 SW 14 | 100 | 0579 9370 244 | 0579 8670 244 |
| 254.5 | GRIP E-FP 254.5 | 250.0 - 256.0 | 5.5 | 14 | 35 | 155 | 285 | 335 | 7.5 | M 16 SW 14 | 100 | 0579 9370 254 | 0579 8670 254 |
| 267.0 | GRIP E-FP 267.0 | 264.0 - 269.0 | 5.5 | 13.5 | 35 | 155 | 310 | 360 | 7.7 | M 16 SW 14 | 100 | 0579 9370 267 | 0579 8670 267 |
| 273.0 | GRIP E-FP 273.0 | 270.0 - 275.0 | 5.5 | 13 | 35 | 155 | 315 | 365 | 7.8 | M 16 SW 14 | 100 | 0579 9370 273 | 0579 8670 273 |
| 306.0 | GRIP E-FP 306.0 | 302.0 - 308.0 | 5.5 | 10.5 | 35 | 155 | 350 | 400 | 8.4 | M 16 SW 14 | 120 | 0579 9370 306 | 0579 8670 306 |
| 323.9 | GRIP E-FP 323.9 | 320.0 - 327.0 | 3 | 9.5 | 35 | 155 | 365 | 415 | 8.7 | M 16 SW 14 | 120 | 0579 9370 323 | 0579 8670 323 |
| 326.0 | GRIP E-FP 326.0 | 322.0 - 329.0 | 3 | 9.5 | 35 | 155 | 370 | 420 | 8.8 | M 16 SW 14 | 120 | 0579 9370 326 | 0579 8670 326 |
| 355.6 | GRIP E-FP 355.6 | 352.0 - 359.0 | 2.7 | 8.5 | 35 | 155 | 400 | 450 | 9.3 | M 16 SW 14 | 120 | 0579 9370 355 | 0579 8670 355 |
| 406.4 | GRIP E-FP 406.4 | 402.0 - 410.0 | 2.5 | 7.0 | 35 | 155 | 450 | 500 | 10.2 | M 16 SW 14 | 120 | 0579 9370 406 | 0579 8670 406 |
| 419.0 | GRIP E-FP 419.0 | 415.0 - 422.0 | 2.5 | 6.5 | 35 | 155 | 460 | 510 | 10.4 | M 16 SW 14 | 180 | 0579 9370 419 | 0579 8670 419 |

PN¹ (Nominal Pressure) is the max. admissible working pressure in shipbuilding, based on a safety factor of ≥ 4.

MAWP¹ (Maximum Allowable Working Pressure) is the max. admissible working pressure in shipbuilding, based on a safety factor of ≥ 4.

WP² is the max. working pressure in industrial applications, with a safety factor as per NORMA specification.

... = Ø without decimals in mm